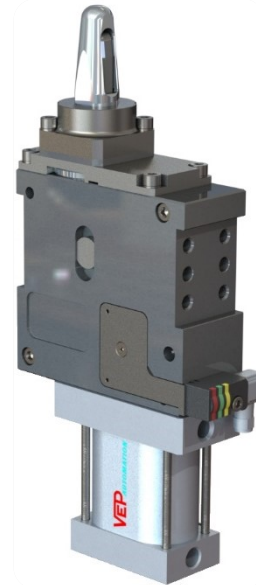


锁紧和定位单元(钩销缸) DCA50.2

Locking and holes centering device (Sub level) DCA50.2

主要特点:

- 铁质外壳
- 客户定制钩子, 定位销和台阶面高度
(定位销直径从 $\varnothing 20\text{mm}$ - $\varnothing 40\text{mm}$, 定位销最大高度是直径的 5 倍)
- +0/+0,15 mm 公差补偿
- 2 个安装面 (前面和后面)
- 50mm 扁平气缸带 4 个 G1/4" 气源接口
- 电感式接近开关: 3 LED 灯, M12x1 接口
- 带手动版本 DCAM50.1
- 带滑动防焊渣保护板



Main characteristics:

- Steel flanks
- Customized hooks, locator pins
($\varnothing_{\text{min.}}$ 20mm ÷ $\varnothing_{\text{max.}}$ 40mm, max height 5 times the \varnothing of the pin) and thickness plate
- +0/+0,15 mm tolerance compensation
- 2 mounting areas (front and rear)
- Flat pneumatic cylinder bore 50mm with 4 feeding ports G1/4"
- Inductive proximity switch: 3 LEDs, connection M12x1
- Manual version DCAM50.1
- Flowing weld splashes protection



[PDF](#)



[3D Step](#)



[Index](#)

索引.

Index.

页码 Page	描述 Description	
1	主要特点 Main characteristics	
2	订货举例 Ordering example	
3	尺寸页码 Dimensional page	DCA50.2...
4		DCAM50.2...
5	表面处理工艺描述 Treatments description	
6	电感式接近开关 / 接气原理图表 Diagram for inductive proximity switch / Pneumatic plan	
7	备件/产品参考编号 Spare parts / Drawing reference number	
8	备注 / Notes	

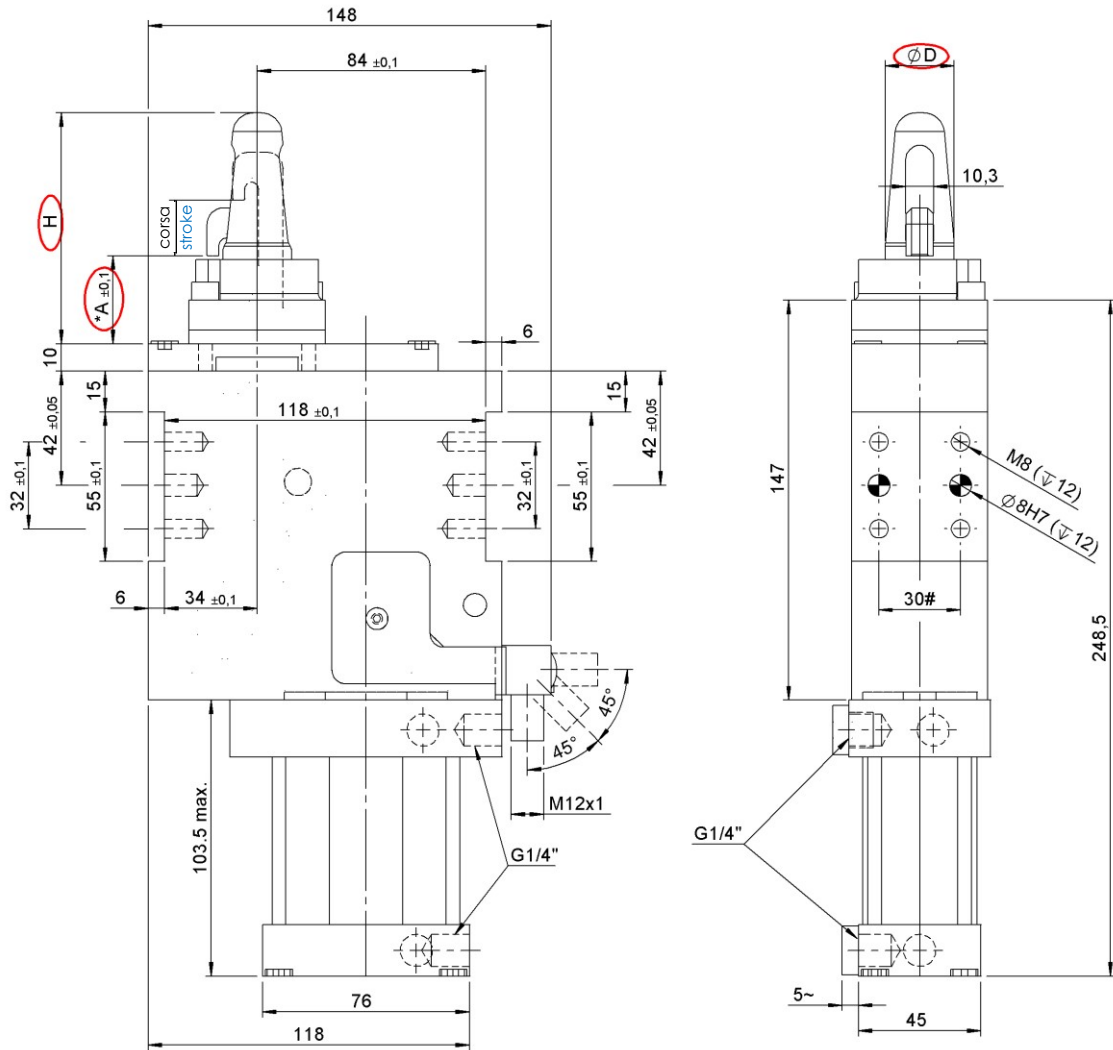
订货举例.

Ordering example.



DCA50.1...

钩销缸 I, D. 50 直径, 标准钩销缸
Sub-level, D. 50, standard design



***夹紧范围:**

如果工作范围不正确 (± 0.1), 可能导致钩子变形。

***Clamping zone:**

A not correct working range (± 0.1), could be causing a hook deformation

$\varnothing D$: $\varnothing 20 \text{ mm} - \varnothing 40 \text{ mm}$.
 $\varnothing_{\min.} 20 \text{ mm} \div \varnothing_{\max.} 40 \text{ mm}$.
 H: 最大高度是 " $\varnothing D$ " 的 5 倍
 max. n.5 x " $\varnothing D$ "

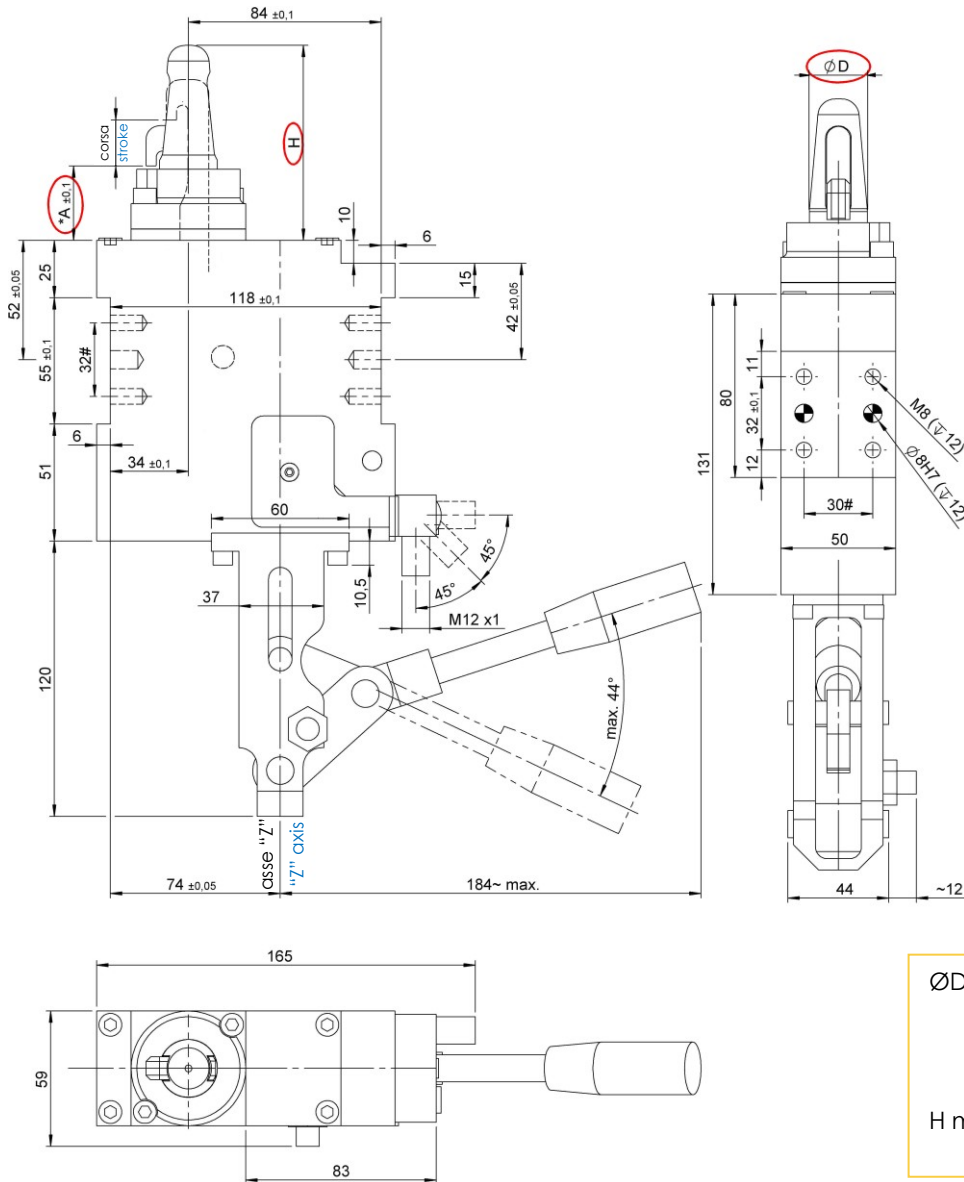
#公差: 定位销孔 ± 0.02 , 螺纹孔 ± 0.1

#Tolerances: dowel holes ± 0.02 , screw holes ± 0.1

类型 Type	气缸缸径 Cylinder bore	最大夹紧力 (6 bar) Max. clamping force (6 bar)	重量 Weight	最大保持力 Max. working force	空气耗气量 (6 bar) Air consumption (6 bar)	工作气压 Working pressure
	[mm]	[daN]	[Kg]	[daN]	[l]	[bar]
DCA50.1...	50	400 (A)	~5,7	470	~ 0,6	5 - 8

DCAM50.1...

手动钩销缸, 标准设计
Manual Sub-level, standard design



ØD: 最小 Ø.20 mm
最大 Ø.40 mm.
Ømin. 20 mm
Ømax. 40 mm.
H max. = 5 x "ØD"
5 x "ØD"

***夹紧范围:**

如果工作范围不正确 (±0,1), 可能会导致钩子变形.

***Clamping zone:**

A not correct working range (±0,1), could be causing a hook deformation

如果需要, 手动机构可以旋转 180° 反向安装, 在 "Z" 方向.

If required, hand control can be placed on the opposite side by turning it 180° around axis "Z".

#公差: 定位销孔 ±0.02, 螺纹孔 ±0.1

#Tolerances: dowel holes ±0.02. screw holes ±0.1

类型 Type	最大夹紧力 (6 bar) Max. clamping force (6 bar)	重量 Weight	最大保持力 Max. working force	工作气压 Working pressure
	[daN]	[Kg]	[daN]	[bar]
DCAM50.1...	400 (A)	~ 6	470	5 - 8

表面处理工艺描述.

Treatments description.

NT3 (表面渗氮)

NT3表面渗氮处理工艺可以达到HV1>1600(~>55HRC)的硬度和0.3mm的深度, 然后就逐渐衰减到他的自然硬度(HV~280). NT3表面处理工艺经常用于直径较小的定位销。它的颜色是灰色。

NT3 (Nitriding)

Nitriding NT3 treatment has an hardness HV1 > 600 (~ >55HRC) up to a depth of 0.3mm, then it collapses leaving the material to its natural hardness (HV~280). NT3 treatment is often recommended for small sizes locating pins. Its color is grey.

STD (标准定位销)

表面渗碳加抛光处理工艺, 硬度可以达到58-62HRC, 渗碳深度0.5mm, 然后硬度逐渐衰减。对缺口有良好的抵御性。因为表面抛光, 颜色是黑色。

STD (Standard Option)

Standard carburizing treatment + burnishing has an hardness of 58÷62 HRC up to a depth of 0.5mm, then it decreases progressively. Good resistance to nicking problems. Its color is black due to the burnishing

WCC (WC/C碳化钨表面涂层)

WCC处理工艺是基本STD标准定位销的基础上, 增加了碳化钨表面涂层。WCC表面处理工艺硬度可以达到(1000 ÷ 1500 HV 0.05), 厚度为0.003mm.

WCC涂层 (wc/c) 由碳化钨和非晶碳组成。它具有优异的耐磨性和较低的摩擦系数。它是减少刮伤或其他粘附现象的理想方法。它的颜色是煤灰色。

WCC (WC/C tungsten carbide)

The surface coating based on tungsten carbide WCC is in addition to STD cementation treatment described above. The WCC treatment has high hardness characteristics (1000 ÷ 1500 HV 0.05) and a thickness of 0,003mm.

The WCC coating (WC/C) is composed of tungsten carbide and amorphous carbon. It has an excellent wear resistance and a reduced friction coefficient. It is ideal for reducing seizures or other adhesive phenomena. Its color is anthracite.

DLC (类金刚石涂层)

DLC类金刚石涂层表面处理工艺是基于标准定位销基础上增加了类金刚石涂层。DLC涂层拥有较高的硬度(1500 ÷ 2500 HV 0.05), 涂层厚度为0.003mm.DLC处理工艺由SP2碳(石墨)和SP3碳(金刚石)组成。它具有很高的耐磨性和很低的摩擦系数。它是减少或消除磨损、刮伤和粘附现象的理想选择。它的颜色是闪亮的黑色

DLC (Diamond Like Carbon)

The surface coating carbon based DLC is in addition to STD cementation treatment described above. The DLC treatment has very high hardness characteristics (1500 ÷ 2500 HV 0.05) and a thickness of 0, 003mm. The DLC coating consists of carbon sp2 (graphite) and Carbon SP3 (diamond). It has very high wear resistance and a very low friction coefficient. It is ideal for minimizing or eliminating problems of abrasions and seizures and adhesive phenomena. Its color is shiny black.

- 定位销直径 > 20mm 优先选择 **STD/WCC/DLC**

For locator pins with diameter > 20 mm is preferred to use the type **STD/WCC/DLC**

定位销直径 ≤ 20mm 组件的功能只能通过选择 NT3 来保证

For locator pins with diameter ≤ 20mm the functionality of the component is only guaranteed by choosing the type **NT3**

更多信息, 请联系 VEP 自动化公司技术部门。

For more information, contact the technical department of VEP Automation.

电感式接近开关图表

(代码. **06862/R/C** 带红色 LED, **06862/W/C** 带白色 LED).

Diagram for Inductive proximity switch

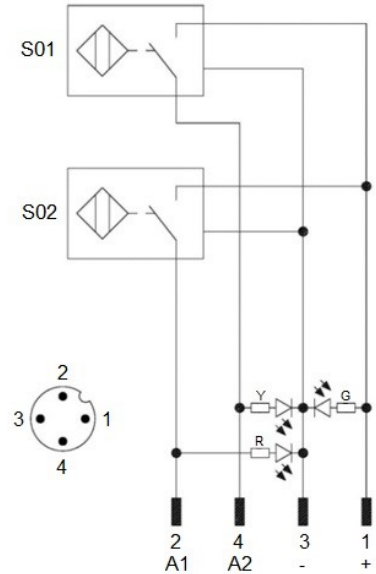
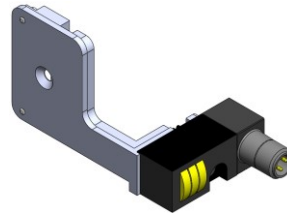
(cod. **06862/R/C** with red LED, **06862/W/C** with white LED).

技术数据(P+F):

- 输出类型: PNP;
- 供电电压: 10-30 VDC;
- 最大换向电流: 200 mA;
- 电源供应: < 25 mA;
- 电压差: <2 V
- 温度范围: -25° / 70° C.

Technical data (P+F):

- Output type: PNP;
- Feeding voltage: 10-30 VDC;
- Max. commutating current: 200 mA;
- Power supply: < 25 mA;
- Voltage drop: < 2 V;
- Temperature range: -25° / 70° C.



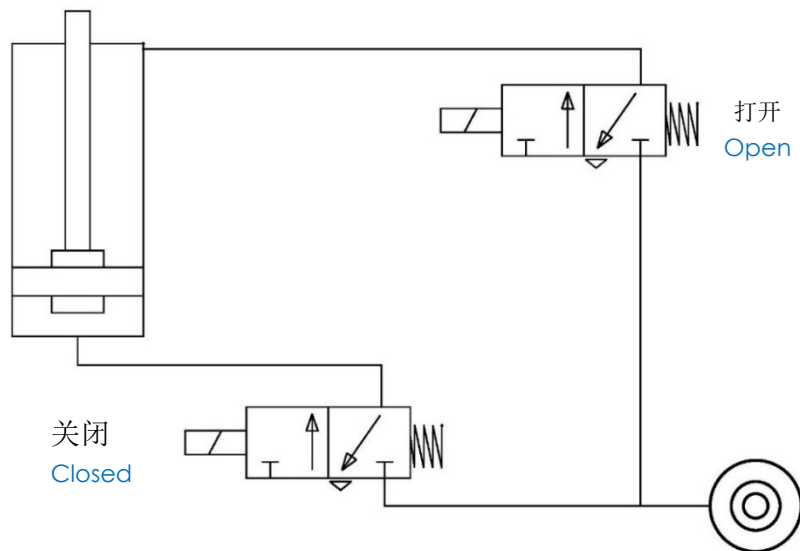
S01 = 打开信号
S01 = opening signal
S02 = 夹紧型号
S02 = closing signal

Y = 黄色 LED / yellow LED
G = 绿色 LED / green LED
R = 红色 LED / red LED

1 = 棕色线 / brown wire
2 = 黑色线 / black wire
3 = 蓝色线 / blue wire
4 = 白色线 / white wire

气路图.

Pneumatic plant.



工作气压 Working pressure	空气耗气量 (5 bar) Air consumption (5 bar)
[bar]	[l]
5 - 8	0,6

备件.

Spare parts.

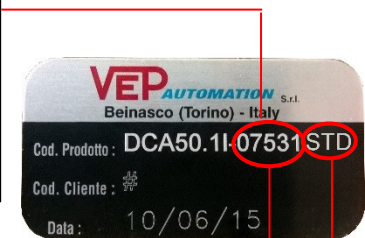
# Kit	图片 Picture	描述 Description	代号 Article
接近开关 Proximity switch		电感式接近开关带红色 LED Inductive proximity switch with red LED	06862/R/C
		P+F 电感式接近开关带白色 LED Inductive proximity switch P+F with white LED	06862/W/C
密封圈套件 Seals kit		50 mm气缸缸体密封组件 Seal components for pneumatic cylinder bore 50 mm	SCR-CIL50V
钩子 Hook		钩子+活动焊渣保护板 Hook + flowing weld splashes protection	HK-00000 *
定位销 Locator pin		定位销 Locator pin	LP-00000XXX **
气缸铝壳体 Cylinder liner		气缸铝壳体 Complete pneumatic cylinder	CL-00000 *

产品参考编号.

Drawing reference number.

* 00000 =在产品完整代码中描述的参考编号
 举例: HK - "07531" 为钩子备件
 CL - "07531" 气缸铝壳体

* 00000 = reference number describe in the complete code of the device.
 Example: HK - "07531" for spare hook
 CL - "07531" for spare cylinder liner



** 00000XXX =在产品完整代码中描述的参考编号+ 定位销表面处理工艺
 举例: LP - "07531STD" 为标准定位销

** 00000XXX = reference number describe in the complete code of the device + type of the treatment present on the locator pin
 Example: LP - "07531STD" for standard locator pin



这个目录取消并替换了以前的目录。我们保留在没有任何通知的情况下进行添加或更改的权利。产品目录中的产品是标准的;任何特殊申请的查询都由技术/销售部门评估。完整的文档属于VEP自动化s.r.l, 未经许可, 任何形式的复制都是禁止的。

This catalogue cancels and replaces the previous ones. We reserve the right to make additions or changes without any notice. The products in the catalogue are standard; any enquiry of special applications is evaluated by technical/sales department. The complete documentation belongs to VEP Automation S.r.l. and without permission any kind of reproduction is forbidden.

VEP Automation Headquarters

VEP Automation S.r.l

Via San Felice, 37
10092 Beinasco – Torino (Italy)
Tel. +39 011 3972572
Email: info@vepautomation.it
Web: www.vepautomation.it

VEP Automation Germany

VEP Automation GmbH

Fritz Liebsch Str. 29
D 26723 Emden (Germany)
Tel. +49 04921 450758
Email: info@vepautomation.de
Web: www.vepautomation.de

VEP Automation America

VEP Automation S.A. de C.V.

Av. Toluca 373 - 3A Col. Olivar de los
Padres Del. Álvaro Obregón
01780 CDMX – (Ciudad de México)
Tel. +52 55 8582 8025
Email: info@vepautomation.mx
Web: www.vepautomation.mx

VEP Automation China

柯莱普自动化科技有限公司

苏州柯莱普自动化科技有限公司
地址: 中国江苏省苏州市吴中区友新路 168 号
张玲大厦 2 幢 333 室
Tel.: +86 0512 65753608
Email: info@vepautomation.cn
Web: www.vepautomation.cn